

| MINI (7/8") Cables by Murrelektronik

Murrelektronik's new Mini-A (7/8") cables are the perfect solution for power and control circuit connections. Cable assemblies are c(UL)us Listed. Available in 3, 4 or 5-pole and all configurations of head types. The cable range includes a Tray Cable-Exposed Run TPE with FT4 flame rating, a PVC STOOW, and a Halogen Free PUR, all in 16AWG with 600V rating.

c(UL)us Listed assemblies

Cable Types

- TPE (TC-ER, FT4) - Yellow
- PVC (STOOW) - Yellow
- PUR (Halogen Free) - Black

Conductor Count

- 5-pole
- 4-Pole
- 3-Pole

Head Types

- Female
- Male w/ External Thread
- Male w/ Internal Thread
- Straight & 90°

Protection

- IEC IP68



Scan the QR to watch our Torque Wrench (Art. No. 7000-99105-000000) video and see how it can assist in your next mini cable installation.

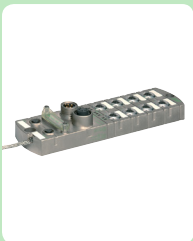


| PROPERTIES

Cable Type	PUR	STOOW	TC-ER-FT4
	UM_	UB_	U1_
Material	PUR	PVC	TPE
UL AWM	20234 80C 1000V		21002 105C 600V
Approvals	UL 2238 CSA	UL 2238 UL/CSA: STOOW 105C (-40C) 600V	UL 2238 UL: TC-ER 90C (-40C) CSA: CIC-TC FT4
Flame Retardant	✓	✓	✓
Chemical Resistant	✓	✓	✓
Oil Resistant	✓	✓	✓
UV Resistant			✓
Halogen Free	✓		
Weld Slag Resistant			✓
Flex Rating	5 million		2 million
Temp. Range (Flexing)	-20 to 80°C (-4 to 176°F)	-20 to 90°C (-4 to 194°F)	-20 to 90°C (-4 to 194°F)
Temp. Range (Fixed)	-50 to 80°C (-58 to 176°F)	-50 to 105°C (-58 to 221°F)	-50 to 105°C (-58 to 221°F)
Jacket Color	Black	Yellow	
Connector Color Code	●●●●●	○●●●●	

MURRELEKTRONIK Related Products

MVK



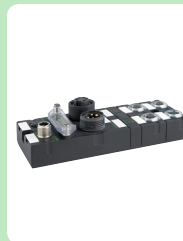
Impact67



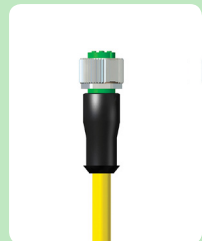
Emparro67



Cube67+



M12 TPE Cable



Code	Type	Cable OD (mm)			Cable Description
		3p	4p	5p	
U1x	TPE	8.4	9.0	9.8	(UL) TC-ER 90C (-40C) SUNLIGHT RESISTANT OIL RES II 600V OR AWM 105C 600V OR CSA CIC-TC 105C (-40C) 600V FT4
UBx	PVC	10.0	10.8	12.7	(UL) & CSA STOOW 105C (-40C) 600V FT2
UMx	PUR	7.4	8.0	8.7	c(UR)us AWM STYLE 20234 AWM I/II A/B 80C 1000V FT1, HALOGEN FREE

Standard Lengths (xxxx)			
Single Ended			
1.5m (0150)	3m (0300)	5m (0500)	10m (1000)

Double Ended			
0.3m (0030)	0.6m (0060)	1m (0100)	1.5m (0150)
2m (0200)	3m (0300)	5m (0500)	10m (1000)

| SINGLE ENDED CABLE

| MALE STRAIGHT



Poles	TPE	PVC	PUR
3	7700-A3001-U1Bxxxx	7700-A3001-UBBxxxx	7700-A3001-UMBxxxx
4	7700-A4001-U1Cxxxx	7700-A4001-UBCxxxx	7700-A4001-UMCxxxx
5	7700-A5001-U1Dxxxx	7700-A5001-UBDxxxx	7700-A5001-UMDxxxx

| DOUBLE ENDED CABLE

| MALE STR - FEMALE STR



Poles	TPE	PVC	PUR
3	7700-A3A01-U1Bxxxx	7700-A3A01-UBBxxxx	7700-A3A01-UMBxxxx
4	7700-A4A01-U1Cxxxx	7700-A4A01-UBCxxxx	7700-A4A01-UMCxxxx
5	7700-A5A01-U1Dxxxx	7700-A5A01-UBDxxxx	7700-A5A01-UMDxxxx

| MALE 90°



Poles	TPE	PVC	PUR
3	7700-A3011-U1Bxxxx	7700-A3011-UBBxxxx	7700-A3011-UMBxxxx
4	7700-A4011-U1Cxxxx	7700-A4011-UBCxxxx	7700-A4011-UMCxxxx
5	7700-A5011-U1Dxxxx	7700-A5011-UBDxxxx	7700-A5011-UMDxxxx

| MALE 90° - FEMALE STR



Poles	TPE	PVC	PUR
3	7700-A3A11-U1Bxxxx	7700-A3A11-UBBxxxx	7700-A3A11-UMBxxxx
4	7700-A4A11-U1Cxxxx	7700-A4A11-UBCxxxx	7700-A4A11-UMCxxxx
5	7700-A5A11-U1Dxxxx	7700-A5A11-UBDxxxx	7700-A5A11-UMDxxxx

| FEMALE STRAIGHT



Poles	TPE	PVC	PUR
3	7700-A3021-U1Bxxxx	7700-A3021-UBBxxxx	7700-A3021-UMBxxxx
4	7700-A4021-U1Cxxxx	7700-A4021-UBCxxxx	7700-A4021-UMCxxxx
5	7700-A5021-U1Dxxxx	7700-A5021-UBDxxxx	7700-A5021-UMDxxxx

| MALE STR - FEMALE 90°



Poles	TPE	PVC	PUR
3	7700-A3A21-U1Bxxxx	7700-A3A21-UBBxxxx	7700-A3A21-UMBxxxx
4	7700-A4A21-U1Cxxxx	7700-A4A21-UBCxxxx	7700-A4A21-UMCxxxx
5	7700-A5A21-U1Dxxxx	7700-A5A21-UBDxxxx	7700-A5A21-UMDxxxx

| FEMALE 90°



Poles	TPE	PVC	PUR
3	7700-A3031-U1Bxxxx	7700-A3031-UBBxxxx	7700-A3031-UMBxxxx
4	7700-A4031-U1Cxxxx	7700-A4031-UBCxxxx	7700-A4031-UMCxxxx
5	7700-A5031-U1Dxxxx	7700-A5031-UBDxxxx	7700-A5031-UMDxxxx

| MALE 90° - FEMALE 90°



Poles	TPE	PVC	PUR
3	7700-A3A31-U1Bxxxx	7700-A3A31-UBBxxxx	7700-A3A31-UMBxxxx
4	7700-A4A31-U1Cxxxx	7700-A4A31-UBCxxxx	7700-A4A31-UMCxxxx
5	7700-A5A31-U1Dxxxx	7700-A5A31-UBDxxxx	7700-A5A31-UMDxxxx